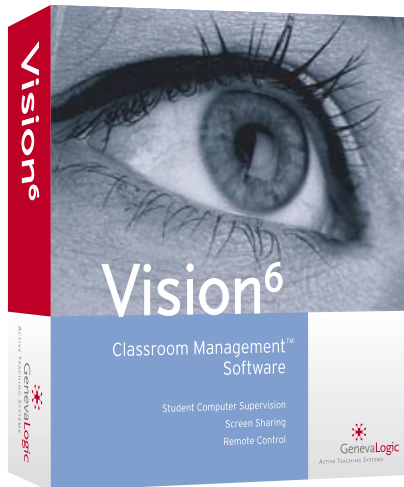


Vision⁶

Classroom Management™ Software



- Guide student learning on computers
- Monitor web browsing to keep students on task
- Engage students by sharing screens
- Supervise student computers
- Remote control of classroom machines
- Blank screens and lock computers
- Wake up or shut down student machines
- Distribute files, collect assignments & chat



Teach

Interact with students and guide learning on computers during class. Improve student comprehension by showing lessons right on their screens. Engage students by allowing them to demonstrate to the class.



Supervise

Watch over student progress and web browsing with a thumbnail view of every student screen on the teacher's computer. Save time and keep students on track by helping off-task students immediately.



Control

Control student PCs and focus student attention by locking the keyboards, mice and blanking student screens during lessons or discussions. Take remote control of student computers to help them accomplish tasks.

FEATURES & BENEFITS



“Students understand complex, computer-related instruction much better because it’s right in front of them on their own screens. They see it, then they do it”

DANIEL GOULD,
WHITEFISH
PUBLIC SCHOOLS
WHITEFISH, MONTANA

“I use Vision to put information on the screen right in front of my students - it commands their attention”

SUSAN KALLSCHMIDT,
OAK HILLS HS
CINCINNATI, OH

Teaching With Vision

Dashboard Vision’s dashboard provides teachers with a complete thumbnail view of every student computer in the classroom while offering intuitive and flexible controls from a clean, uncluttered window that is easy to customize.

Floating Toolbar Access Vision features from a simple floating toolbar on the teacher’s computer that slides out of the way when not in use. This allows one-click access to Vision’s most important functions and is customizable to fit each teacher’s individual needs.

Screen Sharing Vision’s demo feature allows the teacher to share his or her desktop with an individual student, a group, or the entire class. Students can easily follow the demonstration regardless of where they are sitting in the classroom. The advanced screen sharing technology built into Vision provides real time viewing of the teacher’s computer.

Virtual Teacher Share a student’s computer desktop with the rest of the class. Students can demonstrate or present from their computer to the entire class and the teacher. The teacher designates which students are presenting and when the ‘Virtual Teacher’ starts and stops their presentation.

File Distribution and Collection Distribute files, tests, forms, or assignments to student computers and collect files from the student computers automatically on a timer.

Broadcast Multimedia Files Broadcast MPEG, AVI, QuickTime, or Flash movies and animations to student computers during a Demo session.

Supervising With Vision

Supervision Keep an eye on student computer activity by observing an individual student screen or all student screens from the teacher’s computer. Mentor student progress to help individuals and improve classroom time on task. Vision’s dashboard feature shows teachers an updated thumbnail of all the computers in their classroom.

Monitor Web Browsing Watch over web browsing in the classroom to enforce your school’s acceptable use policy and help students stay safe on the web by encouraging responsible behavior.

Chat and Student Questions Create chat sessions between teachers and students or student groups to facilitate class discussions or allow students to ask the teacher a private question during quiet class time.

Instant Surveys Receive feedback from students and gauge their comprehension by sending out multiple choice and True/False questions. Questions are answered anonymously and results automatically appear in a pie chart.

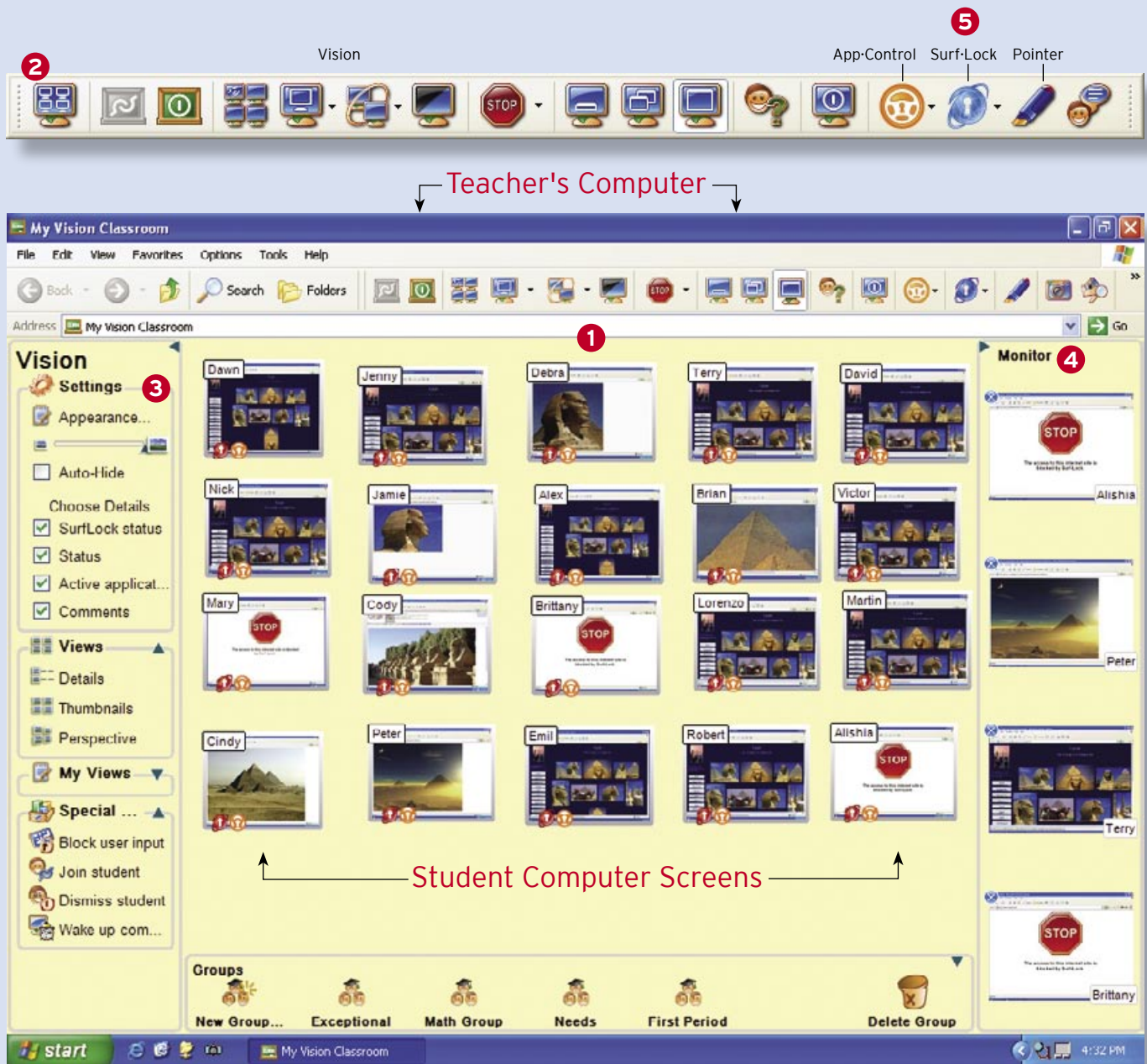
Controlling The Classroom With Vision

Blank Screen Blank student screens during class to focus student attention to the front of the room or control access to classroom computers. The blanked screen can be replaced with a text message, bitmap image, or a web page.

Remote Control Take control of a student’s computer in order to provide one-on-one mentoring or to troubleshoot a problem.

Lock the Keyboard and Mouse Lock student keyboards and mice during class to prevent web surfing, instant messaging and chat during presentations and lessons.

Start Applications and Web Pages Start applications remotely on all student computers or send out the same web page to every student in class to ensure that all students are in the same place at the same time.



- 1 Dashboard** Vision's dashboard interface provides teachers a thumbnail snapshot of all of the computers in their classroom while offering intuitive and flexible controls to monitor and manage student computers. Share screens with students, supervise classroom machines, lock screens and remote control student computers. The dashboard gives teachers a way to instantly view computer activity for the entire class, specific work groups, or just a few students at a time.
- 2 Floating Toolbar** Access your favorite Vision features from a simple floating toolbar when the dashboard is not in use. The Vision toolbar floats unobtrusively on the teacher's computer screen and slides out of the way when the current lesson is being displayed. Personalize the toolbar to take advantage of one-button access to powerful Vision features and plug-ins.
- 3 Settings** Vision's new dashboard controls give teachers unprecedented control of classroom computers. Create custom views of the classroom that show students by seating chart, see active programs on each student computer, enter comments for each computer, and view real-time status of every machine in any custom configuration that supports the individual classroom.
- 4 Monitor Pane** The monitor pane is a special area of the dashboard where student computers can be placed for closer observation. Student computer screens can be dragged into this area so teachers can keep an eye on selected students.
- 5 Plug-Ins** Customize your teaching experience with Vision plug-ins. Surf-Lock gives teachers 'One-Click' control over classroom web surfing. Choose when students access the web or restrict them only to lesson related sites. App-Control allows educators to launch and lock applications on student machines, ensuring the class stays on task during assignments. Pointer is the on-screen annotation tool with over 20 arrows, pointers, spotlights and highlighters to capture student attention during presentations.

Advanced Features

Advanced Installer The Vision6 installer is MSI compliant allowing customers the ability to use third party remote deployment and imaging solutions to perform mass installations over a network to multiple computers.

Remote Start Up & Shut Down Vision is compatible with the Wake on LAN (WOL) industry standard technology to start up computers remotely. Computers that comply with the WOL standard can be powered on from the teacher's computer. The Shutdown feature in Vision can be used to log off, reboot, or shut down all student computers at the end of class.

Extended Classrooms Vision supports communication across subnets and wide area networks. A teacher can instruct one computer lab or many students in multiple classrooms across the school, campus or the entire district.

Mobile Lab and Laptop Support Vision supports fixed labs, laptops and carts. Vision provides unlimited flexibility and ease of use in determining how teacher computers are connected to student computers in mobile lab and laptop environments. Vision's Open Enrollment enables instructors to advertise a class session over the network to which students can connect.

PC System Requirements

Wired Network 10 Mbps full duplex; 10 Mbps or higher recommended

Teacher Operating System Windows 2000 Professional or XP Professional

Student Operating System Windows 98, Me, 2000 Professional or XP Professional. Vision supports classrooms with a combination of operating systems.

Processor Intel® Pentium® III processor or equivalent; 500MHz or higher

Memory 64 MB RAM; 128 MB and higher recommended

Hard Disk 30 MB of available hard-disk space

Video Display Any 100% VGA compatible graphics adapter supported by windows

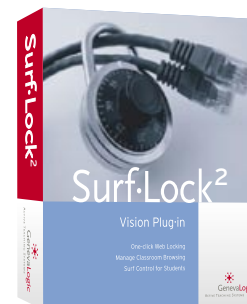
Plug-ins



App-Control Remotely launch and lock applications on all student computers at once. Focus student computer activity by locking the class into selected applications. Open and share documents with all students in a few mouse clicks or send everyone to the same website at once to keep the whole class learning together.



Pointer Pointer includes over 20 annotation tools that can be used in Vision demos or shown on any screen to highlight presentations. Get your students' attention with arrows, highlighters, magnifiers and spotlights. Hide areas of your screen for quizzes and tests. Take snapshots of your screen or student screens.



Surf-Lock2 Surf-Lock2 is the easy-to-use plug-in to Vision that allows 'one-click' blocking of the web or selected access to approved sites for a single student, multiple students, or the entire class. Block surfing or choose allowed sites for the current assignment while locking out the rest of the web. Surf-Lock is compatible with all major browsers.



Keypad Get instant one-touch access to Vision's most important features with the optional keypad.



GenevaLogic

ACTIVE TEACHING SYSTEMS

UNITED STATES

15725 SW Greystone Court, Suite 105
Beaverton, OR 97006
866.725.7833 | Fax 503.352.3413

SWITZERLAND

Chasseralstrasse 1-9
CH-4900 Langenthal
+41 (0)62 957 70 40 | Fax +41 (0)62 957 70 50

Authorized reseller/partner